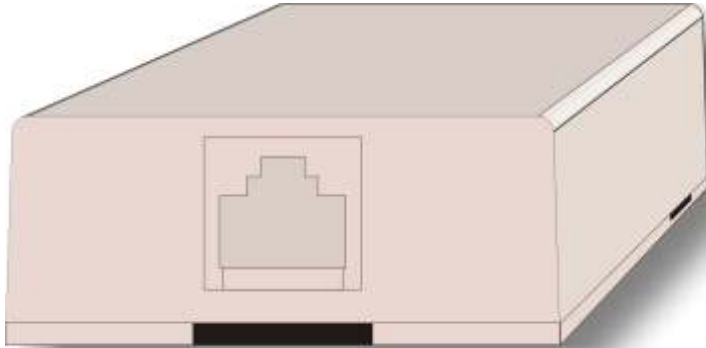


# SAFELINE protection module

For protection and piece of mind.



versatile

easy to use

durable

dependable

The **SafeLine protection module** is a sophisticated protection device designed to protect your valuable telecommunication asset (i.e telephone, data modem, computer, etc.) from damage due to high voltage surges on the line caused by such things as lightning strikes. It provides a very high level of protection by transferring excess energy to earth, rather than absorbing it internally. In order for it to work it must be connected to an appropriate earth according to the correct standards. Its compact design enables the **SafeLine** to be installed just about anywhere without it being obvious in your office or home environment.

## features:

- ▶ dual protection against longitudinal transients
- ▶ continuous protection
- ▶ 180KV protection
- ▶ standard RJ45 socket
- ▶ easy installation
- ▶ compact robust casing

## installation:

**1.** Remove the cover from the modular socket by placing a 6.5mm (or equivalent) spade screwdriver in the side of the module. There is a small space recess in the base of the modular socket which will allow you to insert the spade screwdriver. Twist the screwdriver so that the lid of the modular socket pops off.

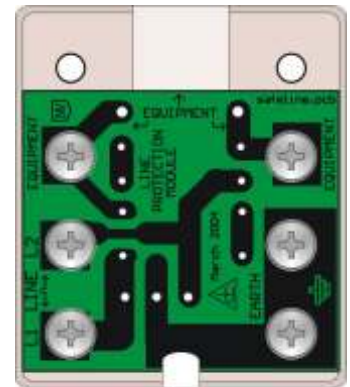


SIDE VIEW

place 6.5mm spade screwdriver here

**2.** Remove all six screws which mount the PCB to the modular socket.

Take note of the two equipment wires already connected (the red and green wires) as you will have to put them back into position later. Be careful not to lose the shock washers which are between the screw and PCB.

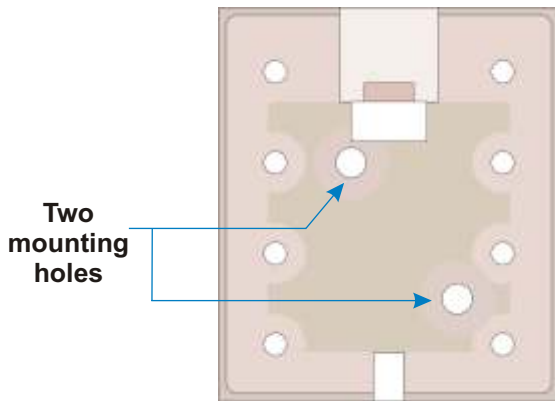


Remove these 6 screws

# SAFELINE protection module

## installation:

**3.** Mount the base of the Line Protection Module to a permanent fixture, (for example the wall) with the mounting holes inside the modular socket and the two screws supplied.



**4.** Replace the PCB to the modular socket and rewire the two equipment wires first. Wire the PSTN line to the module according to the diagram shown on the inside of the lid.

Connect the equipment either to the two screw terminals labeled equipment or to the RJ45 socket. If using the RJ45 socket, the two inner pins are the equipment leads.



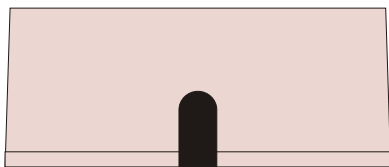
Label underneath the lid

## installation:

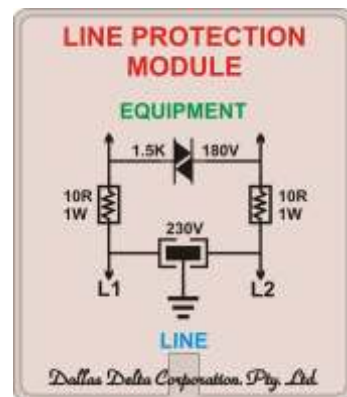
### 5. IMPORTANT !

**Earth must be connected in order for the Line Protection Module to be effective.**

**6.** Feed the wires out of the modular socket through the exit slot provided and place the lid back on the base without jamming any of the leads between each piece which may potentially cut or damage the leads.



SIDE VIEW - Exit slot for leads



Top view of modular socket lid

The information contained on this product brochure is subject to change without notice.



complies with:  
**ACA** All relevant Australian Communications Authority Standards  
**EN60950** European Safety Standard  
**AS/NZS3548** EMI Australia/NewZealand Standard  
**EN55022** EMI European Standard (CISPR22)



designed and manufactured by:

**dallas delta corporation** *pty. ltd.*

102 albert st. east brunswick, victoria, australia 3057  
 tel: (613) 9387 7388 fax: (613) 9387 3128

email: sales@dallasdelta.com.au  
 ABN: 11005 617 532



[www.dallasdelta.com.au](http://www.dallasdelta.com.au)